

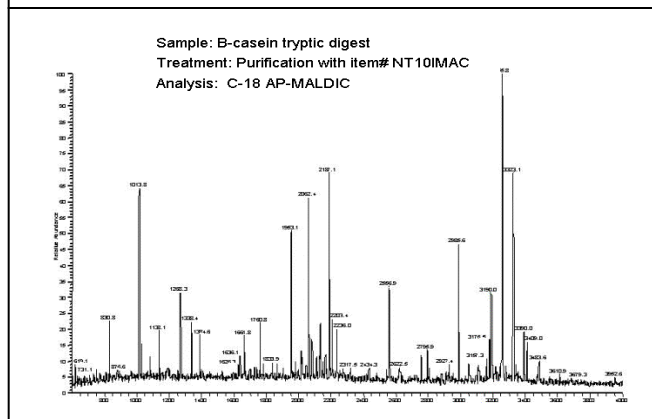
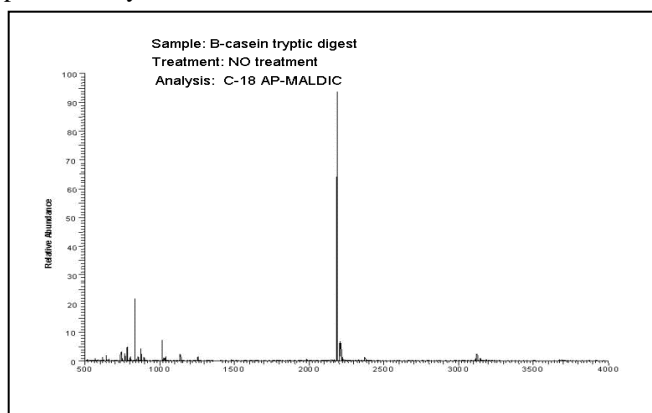
Lab-in-a-Tip™

**Lab-in-a-Tip is a New Concept for:
Sample Cleanup, Enzyme Reactions, Affinity Chromatography, Binding Assays &
Many More Applications**

NuTip™

Sample volumes of 0.1 – 10µl and 10-200µl

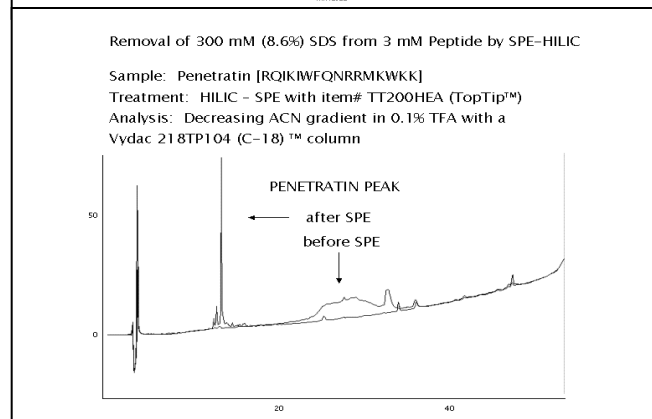
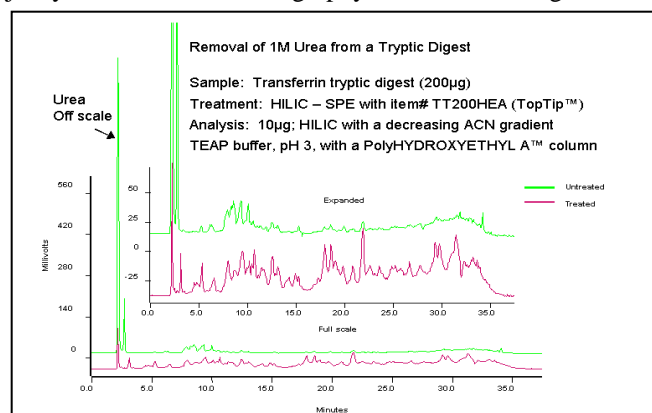
NuTips™ are revolutionary SPE cartridges in which the chromatography material is embedded in the inner surface of a pipette tip. This maximizes the surface area in contact with the sample. The lack of polymers or glue for embedding the material avoids potential problems with contamination or permeability.



TopTip™

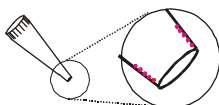
Sample volumes of 1 – 10µl and 10 – 200µl

TopTips™ are revolutionary filterless SPE cartridges based on a pipette tip with a 1-2 µm slit at the bottom. This slit permits liquid to pass through but retains the chromatographic material (20-30 µm) in the tip. TopTips eliminate the need for a filter. No dead volume! Contains just your desired chromatography material; nothing else!



Binding Capacity of Different Products

Product	Capacity*	Amt of Material*
NuTip 1-10 µl	1 µg	0.03mg
NuTip 10-200 µl	2 µg	0.12mg
TopTip 1-10 µl	200 µg	5mg
TopTip 10-200 µl	500 µg	12mg



* Capacity and amt of material may vary depending on solutes used and the density of the packing material. Above table is based on C-18 coated silica (300Å); density = 0.5cc/g and peptides.

Packing Materials Available for both Tips

Silica, C-4, C-8, C-18, graphitic carbon, WCX, SCX, WAX, SAX, polymer-based hydrophobic (POROS), gel filtration, and hydrophilic interaction (HILIC).

- *Faster sample preparation
- *Minimal sample loss
- *No contamination due to a supporting matrix
- *Manipulation of volumes as small as 1µl
- *Cleaner samples